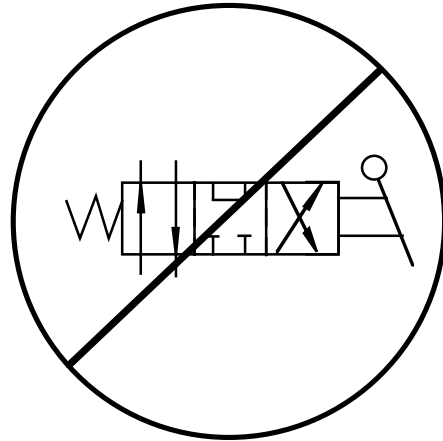
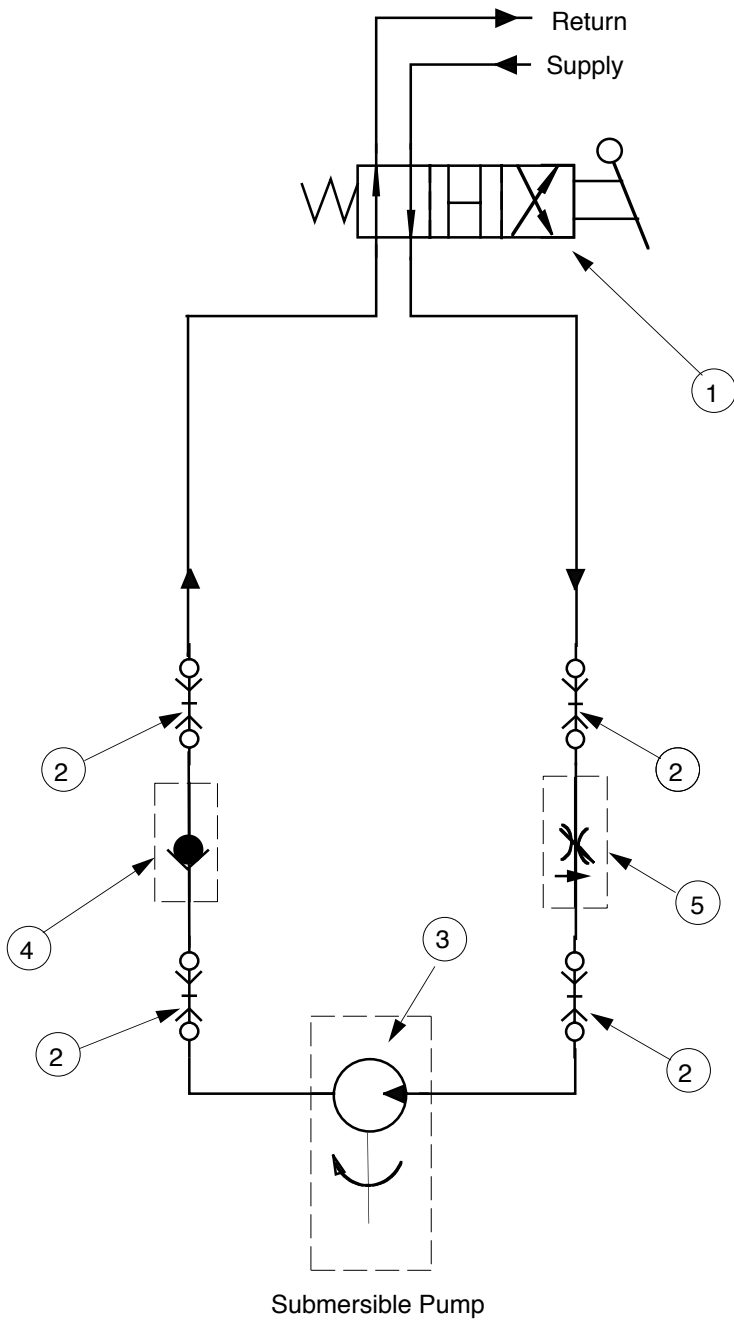


TYPICAL HYDRAULIC SCHEMATIC
FOR CUSTOMER SUPPLIED
HYDRAULIC POWER SOURCE



Do Not use Closed Center Valves!

Return flow from the hydraulic motor must be allowed to return to the oil reservoir to enable the pump impeller to gradually slow to a stop. Blocking this flow will cause damage to the hydraulic motor and pump seal!!

- 1) 4 Way Open Center Directional Valve
(Must be operated in forward direction only or use check valve (4) to prevent reversing)
- 2) Valved Quick Disconnect Coupling
- 3) Hydraulic Motor Driving Submersible Pump
- 4) Check Valve (Recommended)
- 5) Flow Control(Recommended if Hydraulic Flow is Greater than Flow Required By Sub. Pump)